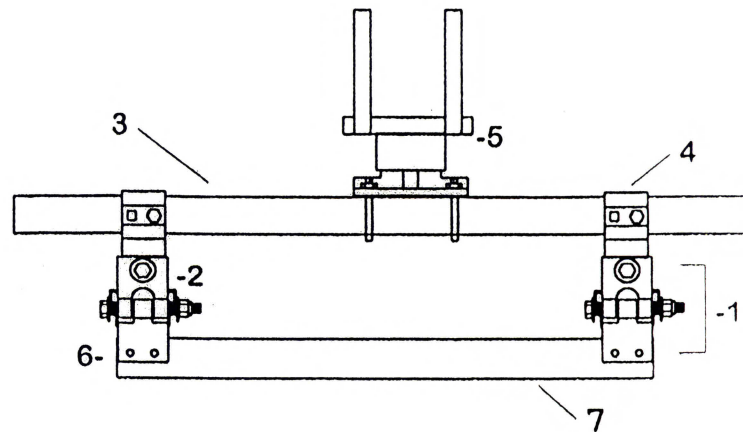
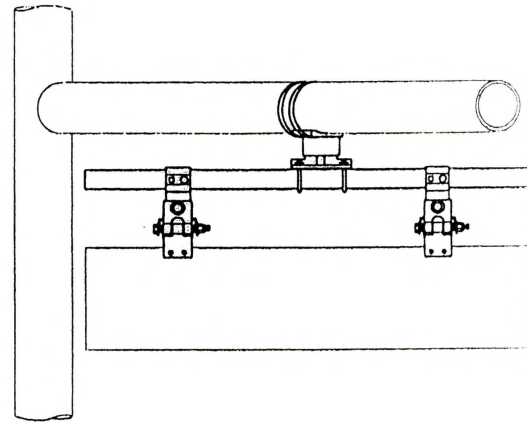


Jenny Offset Sign Bracket

The Jenny Offset Sign Bracket allows mounting of traffic and street signs on Traffic Pole Mast's Arms which are offset (not perpendicular) to traffic. The spring damper design limits additional wind loading to the Pole while keeping the sign visible during wind gusts. The bracket is able to rotate to accommodate various offset angles and even elevation angles. Brackets are attached to mast arms by tightening stainless steel straps that are included. The sliders (-4) can be moved along the support pipe (-3) to match up with the sign mounting holes. Once the sliders are in position it is recommended that the support pipe be drilled and provided hardware be installed through one wall of the support pipe. Brackets are made from aluminum alloy with stainless steel banding, oil impregnated bronze bearings and stainless steel hardware. Stiffeners (-7) provided on signs larger than 66" lg.



Provide sign length when ordering

Part Number	Description	Ref.	lbs
FAB-806	Jenny Offset Sign Bracket		
FAB-806-1	Swivel Assembly	(-1)	1.0
FAB-806-2	1/2" Connecting Hdwr.	(-2)	0.2
FAB-806-3-L	Support Pipe, length	(-3)	-
FAB-806-4	Slider, {FAB-38-3BSB}	(-4)	0.7
FAB-806-5	Arm Clamp Assembly	(-5)	4.0
FAB-806-6	Sign Hardware (x2)	(-6)	0.1
FAB-806-7-L	Stiffener, length	(-7)	-



Flemington Aluminum & Brass, Inc.

24 Junction Road
Flemington, NJ 08822
908-782-6317

Fax 908-782-8078
www.fabonline.net
fab@embarqmail.com